

TEAC

SERVICE MANUAL

DV-C200

DVD Receiver System



NOTES

- PC board shown are viewed from parts side.
- The parts with no reference number or no parts number in the exploded views are not supplied.
- As regards the resistors and capacitors, refer to the circuit diagrams contained in this manual.
- ⚠ Parts marked with this sign are safety critical components. they must be replaced with identical components - refer to the appropriate parts list and ensure exact replacement.

CONTENTS

1 SAFETY INFORMATION	2
2 SPECIFICATIONS	3
3 ADJUSTMENT AND CHECKS	4
4 EXPLODED VIEW AND PARTS LIST	6
5 PC BOARDS AND PARTS LISTS	11
6 WIRING DIAGRAM	23
7 INCLUDED ACCESSORIES	26

DV-C200

1 SAFETY INFORMATION

SAFETY INFORMATION

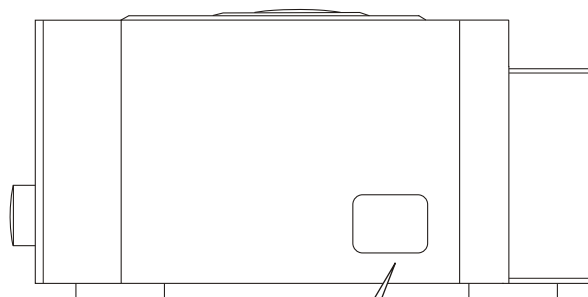
This product has been designed and manufactured according to FDA regulations "title 21, CFR, chapter 1, subchapter J, based on the Radiation Control for Health and Safety Act of 1968" and is classified as class 1 laser product. There is not hazardous invisible laser radiation during operation because invisible laser radiation emitted inside of this product is completely confined in the protective housings. The label required in this regulation is shown ①.

• **CAUTION**

USE OF CONTROLS OR ADJUSTMENT OR PERFORMANCE OF PROCEDURES OTHER THAN THOSE SPECIFIED HEREIN MAY RESULT IN HAZARDOUS RADIATION EXPOSURE.

DO NOT REMOVE THE PROTECTIVE HOUSING USING SCREWDRIVER.

IF THIS PRODUCT DEVELOPS TROUBLE, MAKE A CONTACT WITH OUR SERVICE MAN, AND DO NOT USE THE PRODUCT AT A TROUBLED STATE.



① For U.S.A

Optical pickup:

Type : HOP-1200
Manufacturer : Hitachi Media Electronic Co., Ltd.
Laser output : Less than 0.5mW on the objective lens
Wavelength : 770 - 810 nm(CD), 635-665nm(DVD)

CERTIFICATION

THIS PRODUCT COMPLIES WITH DHHS
RULES 21 CFR SUBCHAPTER J APPLI-
CABLE AT DATE OF MANUFACTURE

TEAC CORPORATION
3-7-3, NAKA-CHO, MUSASHINO-SHI, TOKYO, JAPAN
MANUFACTURED : _____

2 SPECIFICATIONS

DVD Player

Pickup :	Semiconductor laser, Wavelength 650 nm
Signal system :	NTSC / PAL
Audio frequency response :	4 Hz ~22 kHz (PCM48kHz) 4 Hz ~44 kHz (PCM96kHz)
Video output level :	1 Vp-p 75 ohms
S-video output level:	Y: 1 Vp-p 75 ohms, C: 0.286 Vp-p 75 ohms

Tuner

System:	PLL quartz-locked digital synthesizer system
Tuning range :	FM: 87.5 ~ 108.0 MHz (100kHz step) AM: 530 ~ 1710 kHz (10kHz step)
Antenna :	FM pigtail antenna AM loop antenna

Amplifier

Output power :	15W x 2
Total Harmonic distortion :	10 % (rated power / 1kHz)
Frequency response :	180 Hz ~ 14 kHz
Signal to noiseratio :	Over 65dB (CCIR)
Input sensitivity :	400 mV

General

Power requirements:	AC 120V , 60 Hz
Power consumption :	70 watts
Dimension (W x H x D):	(6-7/8 x 5-3/16 x 12-7/8) inches 175 x 132.5 x 327.5 mm
Weight:	4.1 kg (9-1/16 lb)
Supplied accessories :	AM loop antenna x 1 FM antenna x 1 Speaker cable (2m) x 2 Batteries (AAA, R03,UM-4) x 2 Remote Control x 1

Speaker

System :	2-way shielded box
Impedance :	8 ohm
Unit :	3(inches) Woofer + 1(inche) Tweeter
Dimension (W x H x D):	(4-5/16 x 8-1/4 x 16-13/16) inches 110 x 210 x 173 mm
Weight:	1.0 kg (2-3/16)lb

- Design and specifications are subject to change without notice.
- Weight and dimensions are approximate.
- Illustrations may differ slightly from production model.

DV-C200

3 ADJUSTMENTS AND CHECKS

3-1 TUNER SECTION

- Use a screwdriver with a plastic or ceramic grip for all adjustment.

3-1-1 FM adjustment

1. Set the function switch to the FM position.
2. Connect the signal generator output through a 75 ohm dummy antenna to "ANT" on MAIN PCB.
3. Connect the oscilloscope to the speaker terminal.
4. Set the signal generator as listed in the alignment chart.

3-1-2 AM adjustment

1. Set the function switch to the AM position.
2. Connect the test loop antenna across the output of the signal generator.
3. Connect the oscilloscope to the speaker terminal.
4. Set the signal generator as listed in the alignment chart.

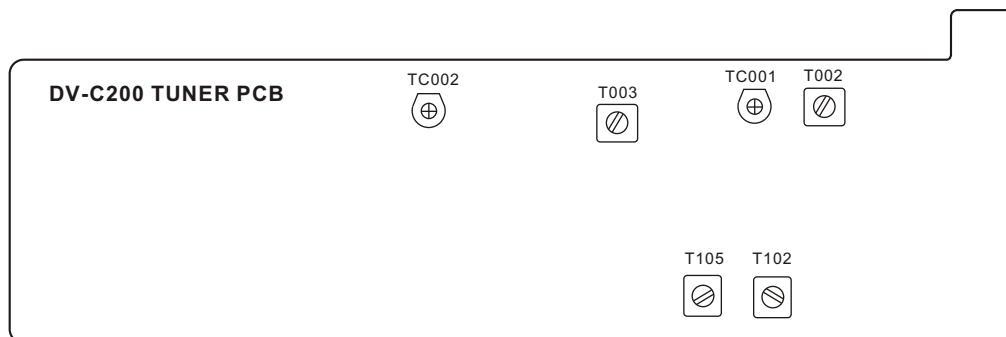


Fig. 3-1-3

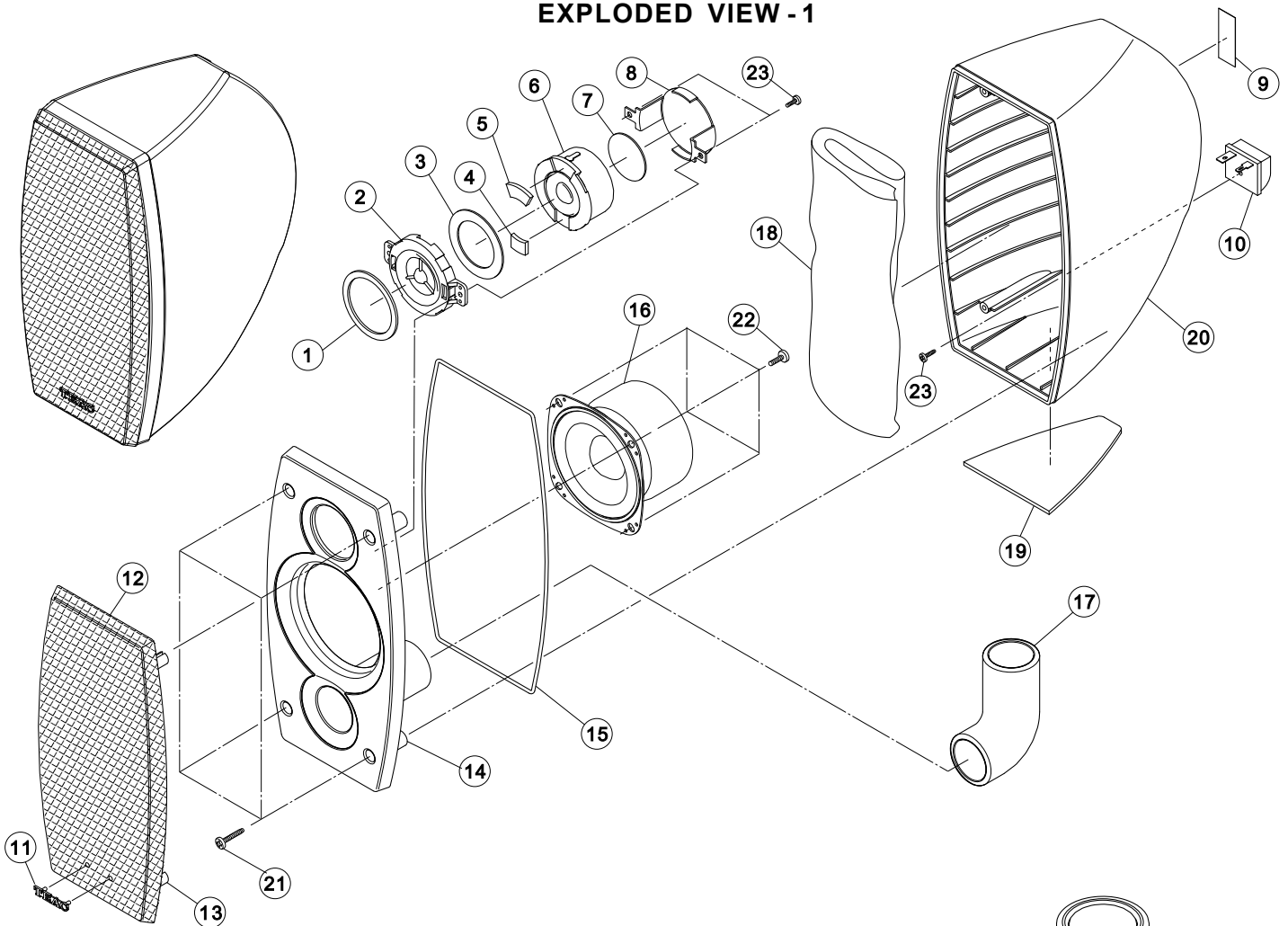
3-1-4 FM/AM alignment chart

ITEM	SG SETTING	TUNER SETTING	ADJUSTMENT POINT	ADJUSTMENT
FM				
1. FM band	87.5MHz 1kHz, +/-22.5kHz dev.	87.5MHz	NIL Should check if the frequency is adjusted to optimal.	Adjust for max.output.
	108MHz 1kHz, +/-22.5kHz dev.	108MHz	NIL Should check if the frequency is adjusted to optimal.	
2. Tracking	90MHz 1kHz, +/-22.5kHz dev.	90MHz	Scope / Voltmeter max.	Adjust for max. output and best waveform.
	106MHz 1kHz, +/-22.5kHz dev.	106MHz	Same as above	
	FM IF 10.7 MHz		T105 IC101 PIN 22	
AM				
1. IF adjustment	450kHz 1kHz, 30% mod	IC101 PIN 24	T102	Adjust for max.output.
2. AM band	522kHz 1kHz, 30% mod	522kHz	T003	Adjust for max. output.
	1620kHz 1kHz, 30% mod	1620kHz	TC002	
3. Tracking	621kHz 1kHz, 30% mod	621kHz	T002	Adjust for max. output and best waveform.
	1404kHz 1kHz, 30% mod	1404kHz	TC001	
	Repeat step 3			

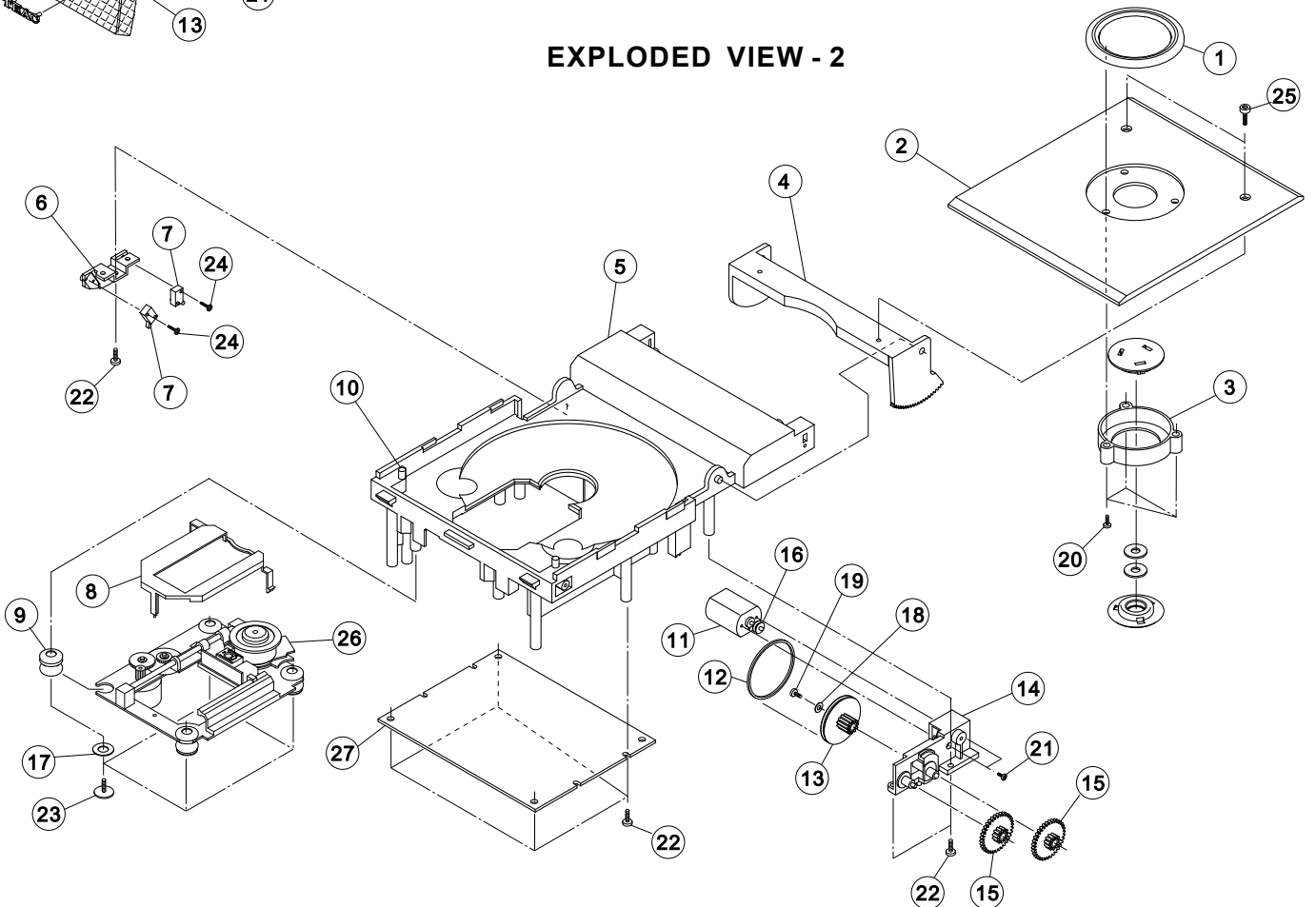
DV-C200

4 EXPLODED VIEWS AND PARTS LIST

EXPLODED VIEW - 1



EXPLODED VIEW - 2



EXPLODED VIEW-1

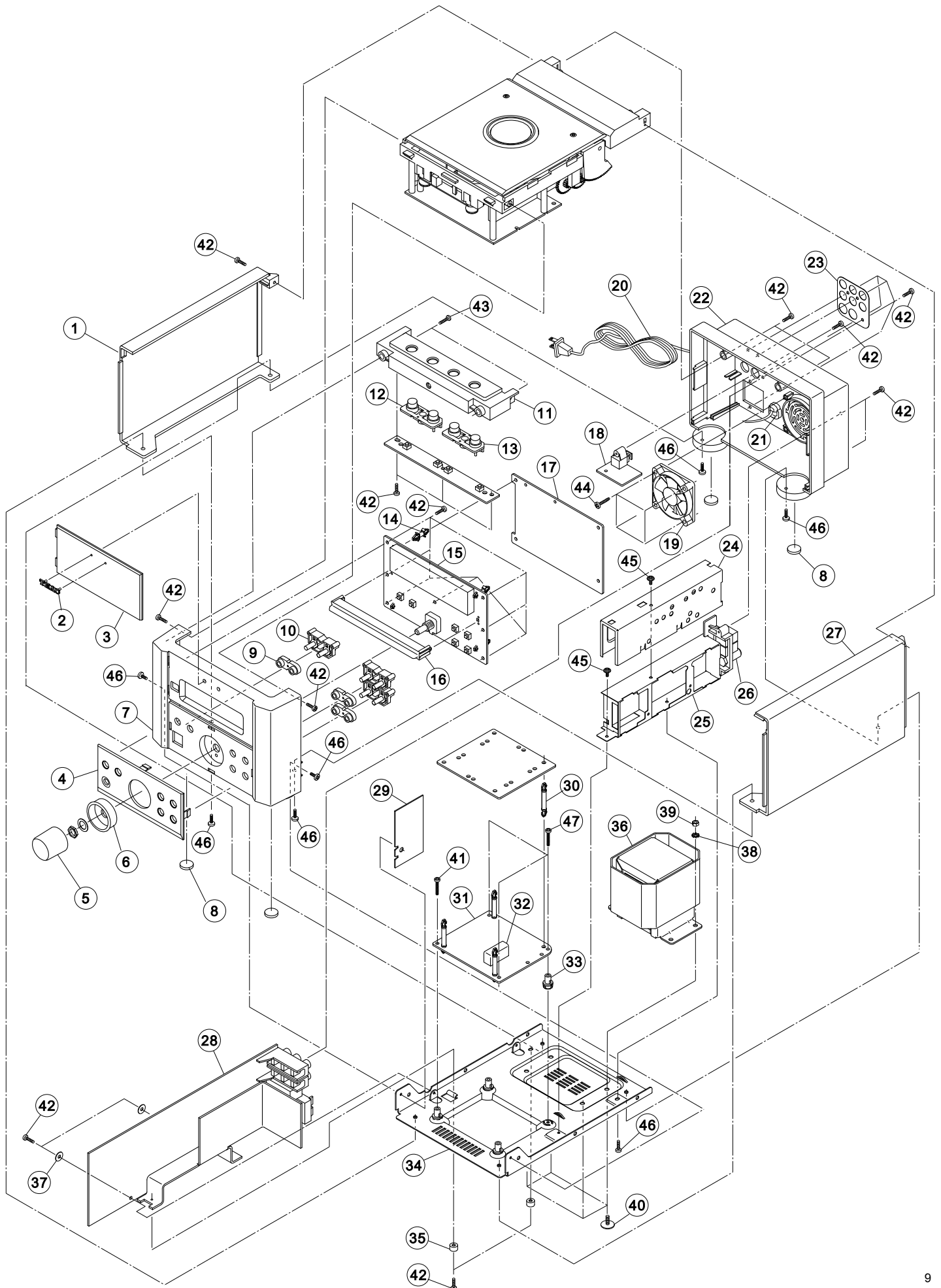
REF. NO	PARTS NO.	DESCRIPTION	REMARKS
1-1	IVE100227-0001	SPONGE PAD	
1-2	BPH100070-0001	BRACKET	
1-3	IVE100226-0001	SPONGE	
1-4	IVE100235-0001	SPONGE	
1-5	IVE100235-0002	SPONGE	
1-6	FSA040510-3310	SPEAKER DRIVER	
1-7	IVE100239-0001	SPONGE	
1-8	GSE100221-0001	DRACKET	
1-9	YLB106000-0082	SPEAKER LABEL	
1-10	CJS002305-0010	SPEAKER JACK	
1-11	BPL010014-0007	LOGO PLATE	
1-12	IVN000018-0005	CLOTH	
1-13	BPG101032-0001	GRILL	
1-14	BPF105040-0001	SPEAKER FRONT PANEL	
1-15	BRB100040-0001	ENCLOSURE RUBBER	
1-16	FSA011530-3310	SPEAKER DRIVER	
1-17	BPR103010-0001	SPEAKER TUBE	
1-18	IVM000009-0001	ACOUSTIC	
1-19	IVE100225-0001	SPONGE	
1-20	BPA100027-0001	SPEAK BACK CABINET	
1-21	HSP140094-3160	SCREW PT4X16 MM-BLK	
1-22	HSP140094-3080	SCREW PT4X8 MM-BLK	
1-23	HSP140054-3080	SCREW PT3X8 MM-BLK	

DV-C200

EXPLODED VIEW-2



REF. NO	PARTS NO.	DESCRIPTION	REMARKS
2-1	BPC100045-0001	TOP COVER	
2-2	BPN100041-0001	TOP WINDOWS LENS	
2-3	BPH100071-0001	COVER HOLDER	
2-4	BPH100068-0001	HOLDER	
2-5	BPH100067-0001	LOADER HOLDER	
2-6	BPH100072-0001	SW HOLDER	
2-7	MSW002005-0010	MICRO SWITCH	
2-8	BPC100046-0001	DUST COVER	
2-9	DRP041005-1001	RUBBER CUSHION	
2-10	BRB100037-0001	TUBE	
2-11	FMT020401-0002	MOTOR	
2-12	BRW000008-0001	BELT	
2-13	BPG001054-0001	GEAR DRIVE	
2-14	BPH000048-0000	GEAR HOLDER	
2-15	BPG001055-0001	GEAR TURN	
2-16	BPP000007-0001	MOTOR PULLEY	
2-17	HWF11C060-6050	FIBRE WASHER	
2-18	HWM116028-9030	WASHER	
2-19	HSP143073-1050	SCREW M2.6x5MM	
2-20	HSP140034-3061	SCREW P/H2.3x6MM-BLK	
2-21	HSP143053-3040	SCREW M2x4MM-BLK	
2-22	HSP140054-1080	SCREW PT3x8MM	
2-23	HSW140054-1081	SCREW P/H3x8MM	
2-24	HSP140014-3070	SCREW PT1.7x7MM-BLK	
2-25	HSH140054-1080	SCREW PT3x8MM	
2-26	WVD100043-0001	LOADER	
2-27		SERVO PCB	

EXPLODED VIEW - 3



DV-C200

EXPLODED VIEW-3

REF. NO	PARTS NO.	DESCRIPTION	REMARKS
3-1	BPS100007-0001	SIDE PANEL (LEFT)	
3-2	BPL010014-0006	LOGO PLATE - SILVER	
3-3	BPN100047-0001	FRONT WINDOW LENS	
3-4	BPF104017-0001	FRONT PANEL	
3-5	BPK105042-0001	VOLUME KNOB	
3-6	BPK105041-0001	VOLUME RING	
3-7	BPF104016-0001	FRONT CABINET	
3-8	BRF100028-0001	RUBBER FOOT	
3-9	BPN100094-0001	KNOB LENS	
3-10	BPK108059-0001	FUNCTION KNOB (FRONT)	
3-11	BPT100012-0001	TOP COVER	
3-12	BPK102060-0002	FUNCTION KNOB (OPEN AND PAUSE)	
3-13	BPK102060-0001	FUNCTION KNOB (TOP)	
3-14	DSS100011-0001	SUPPORT	
3-15	APE100158-0001	CONTROL PCB ASSY	
3-16	BPN100048-0001	LED WINDOW	
3-17	APE100157-0001	MPEG PCB ASSY	
3-18	APE100155-0021	OPTICAL PCB ASSY	
3-19	FAN021203-0004	DC FAN 12V	
3-20	VPA004252-0010	LINE CORD	
3-21	 DBU001006-0010	AC LINE CORD BUSHING	
3-22	BPQ100001-0003	BACK CABINET	
3-23	BNP100073-0001	PVC PLATE	
3-24	GTP100010-0001	TIN PLATE	
3-25	GTP100004-0001	TIN COVER	
3-26	APE100160-0001	TUNER PCB ASSY	
3-27	BPS100008-0001	SIDE PANEL (RIGHT)	
3-28	APE100156-0001	AMP PCB ASSY	
3-29	BPH100080-0001	BRACKET - ABS	
3-30	DSS100001-0002	SPACER	
3-31	APE100155-0011	POWER PCB ASSY	
3-32	DCR030001-0001	FUSE COVER	
3-33	BPH100066-0001	PCB HOLDER	
3-34	GSE100173-0001	BOTTOM	
3-35	DHU210002-0001	WASHER NYLON	
3-36	 TTH112000-0040	TRANSFORMER 120V 60Hz	
3-37	HWG111035-6100	FIBRE WASHER D10x3.5x1MM	
3-38	HWT168540-1100	WASHER D8.5x4x1MM	
3-39	HNT140700-1300	NUT- M4x7x3MM	
3-40	HSD143103-1080	SCREW M4x8MM	
3-41	HST143084-1150	SCREW M3x15MM	
3-42	HSP140054-1080	SCREW PT3x8MM	
3-43	HSP140054-1100	SCREW PT3x10MM	
3-44	HSP140054-1160	SCREW PT3x16MM	
3-45	HSW143083-1040	SCREW M3x4MM WASHER HEAD	
3-46	HSP143084-1080	SCREW M3x8MM	
3-47	HST143084-1140	SCREW M3x14MM	

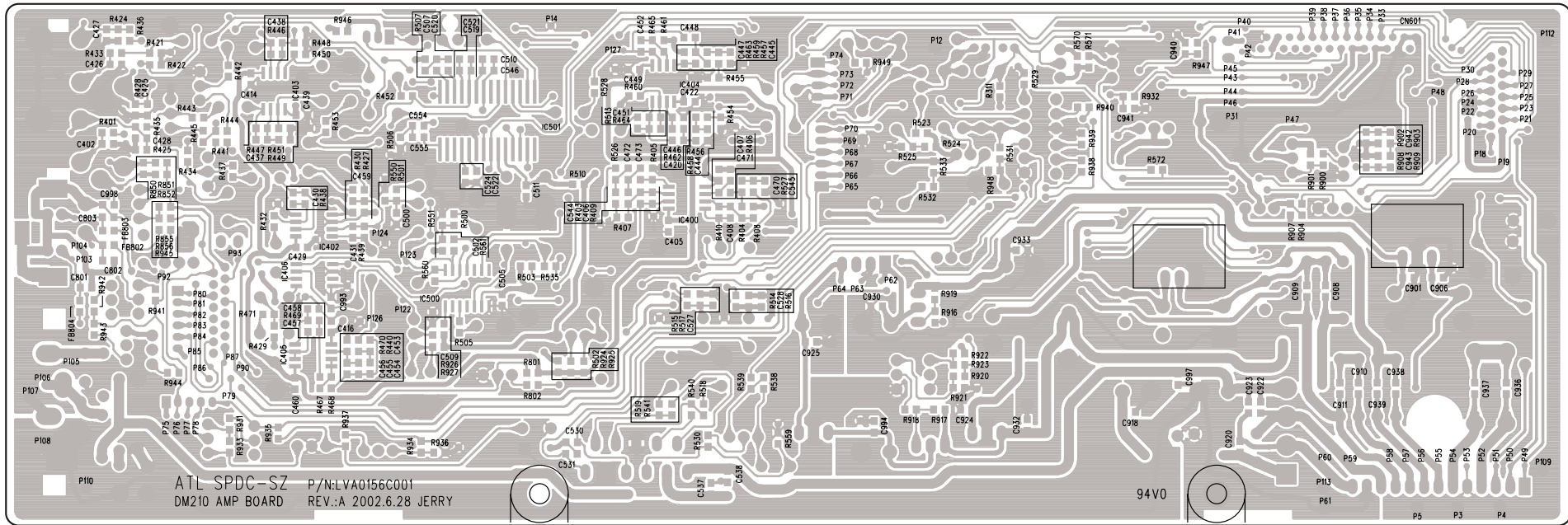
5 PC BOARDS AND PARTS LIST

AMPLIFIER PCB ASSY - TOP

REF. NO	PARTS NO.	DESCRIPTION	REMARKS
	APE100156-0001	AMPLIFIER PCB ASSY	
	LVM100156-0001	AMPLIFIER PCB	
CN601	CCH100010-0628	CONNECTOR 28PIN P=1MM	
FB802-804	SCB008050-6010	CHIP BEAD 600OHM	
IC400,402-405	RCI004558-0001	IC - JRC4558D	
IC406	RCI062426-0001	IC - M62429P	
IC500	RCI002702-0001	IC - NJM2702	
IC501	RCI007440-0001	IC - TDA7440D	

DV-C200

AMP PCB - TOP



AMPLIFIER PCB ASSY - BOTTOM

REF. NO	PARTS NO.	DESCRIPTION	REMARKS
CN301	CCN200000-0106	CONNECTOR 6PIN P=2MM	
CN900	CCH100060-0616	CONNECTOR 16PIN P=2MM	
CN901	CCN200000-0103	CONNECTOR 3PIN P=2MM	
C926-928,935 C988,989	⚠ PVE039550-1020	CE - 25V 1000UF	
C903,904,919,996	⚠ PVE939550-2220	CE - 25V 2200UF	
C934	⚠ PDE039550-4720	CE - 25V 4700UF	
D300,301,500-506 D901-904,906,913, D914	RAD114001-0010	DIODE 1N4001	
D905,912	⚠ RHD115401-0010	DIODE IN5401	
D911	⚠ RHD204060-0010	BRIDGE - RS405	
IC502	RH1007269-0001	IC - TDA7269A	
IC900	RHI007812-0001	IC-7812	
IC901	RHI007912-0001	IC-7912	
IC902,903	RHI007805-0005	IC-BA05T	
JK501	CJR006401-0020	RCA JACK 6P	
JK580	CJR042003-0010	SPK JACK 4P	
JK801	CJC010001-1010	RCA+DIN JACK 4P	
L500,501	SFB001001-0030	BEAD FERIT 100OHM	
Q400-402	RAN202878-0001	TR-2SC2878	
Q500-502,505,521, Q901,903,912,914, Q916,920,925	RAP200733-0001	TR-2SA733	
Q503,522,801,850 Q900,902,906,907, Q909,910,911,913, Q915,917,918,919 Q921,922,923	RAN200945-0001	TR-2SC945	
Q905,908	RHP200772-0001	TR-2SB772	
ZD901	RAZ005009-0010	ZENER DIODE 9V	
ZD902	RAZ005006-0030	ZENER DIODE 6V	

MPEG PCB ASSY - TOP

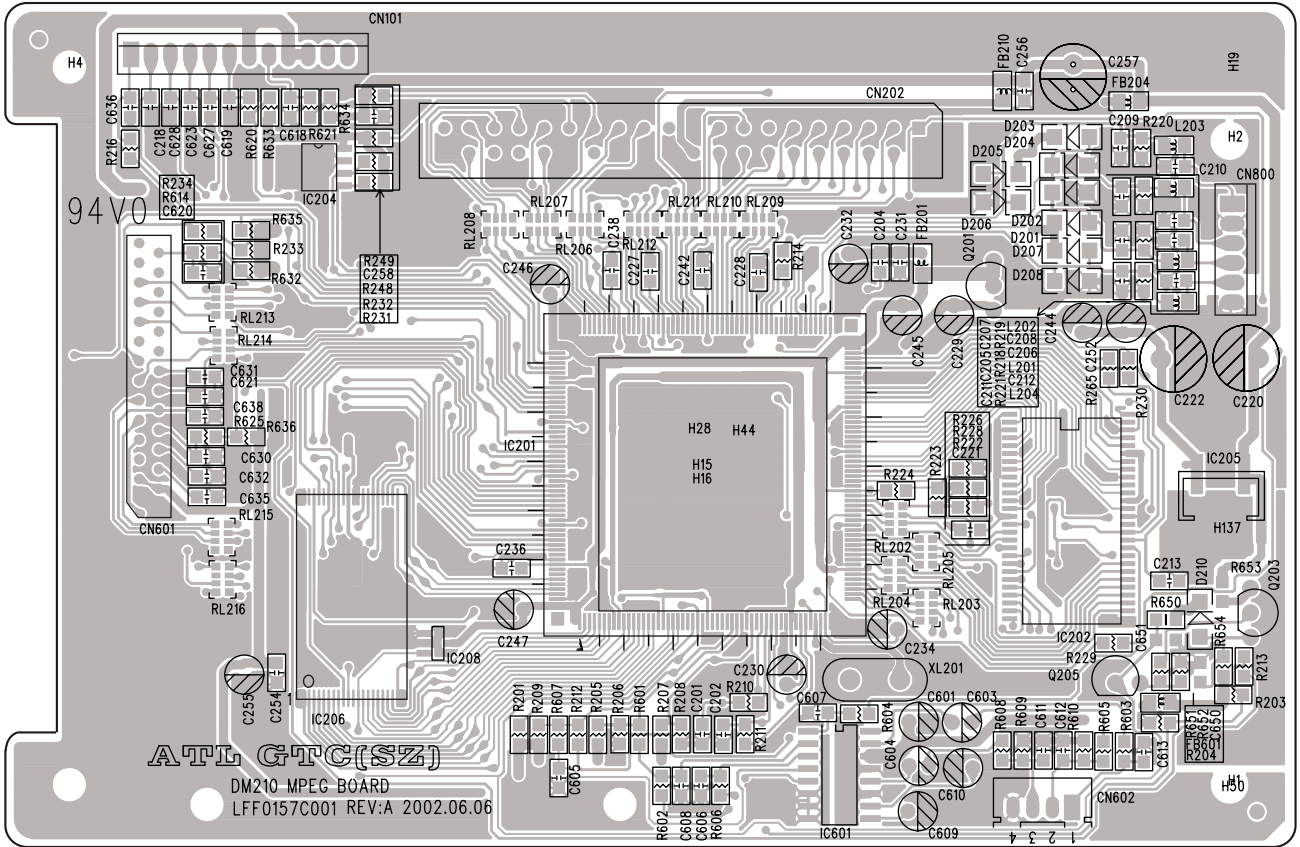
REF. NO	PARTS NO.	DESCRIPTION
	APE100157-0001	MPEG PCB ASSY
	LFF100157-0001	MPEG PCB
CN101	CCN200000-0112	CONNECTOR 12PIN P=2MM
CN202	CCN254020-0440	CONNECTOR 20x2 PIN
CN601	CCH100010-0628	CONNECTOR 28PIN
CN602	CCN200000-0104	CONNECTOR 4PIN P=2MM
CN800	CCN200000 -0106	CONNECTOR 6PIN P=2MM
D201-208,210	RCD104148-0010	CHIP DIODE 1N4148
FB201, FB204,210	SCB008050-1010	CHIP BEAD 100 OHM
FB601	SCB008050-6010	CHIP BEAD 600 OHM
IC201	RCI006018-0001	IC-ES6018
IC202	RCI400160-0001	IC-4MX16 Y3VTW
IC204	RCI024002-0001	IC-AT24C02
IC205	RCI916433-0001	IC-RT9164-33CLR
IC206	RCI290080-0001	IC-AM29F080B
IC601	RCI004340-0001	IC-CS4340
L201-204	SCN023500-2490	CHIP INDUCTOR 2.4UH
Q201	RAN202001-0001	TR-2SC2001L
Q203	RHP200733-0001	TR-2SA733
Q205	RAN200945-0001	TR-2SC945
RL203-205	QCP015081-1000	RES ARRAY 10 OHMx4
RL202,208-216	QCP015081-3300	RES ARRAY 33 OHMx4
RL206,207	QCP015081-4700	RES ARRAY 47 OHMx4
XL201	JQC023101-2760	CRYSTAL 27MHZ

MPEG PCB ASSY - BOTTOM

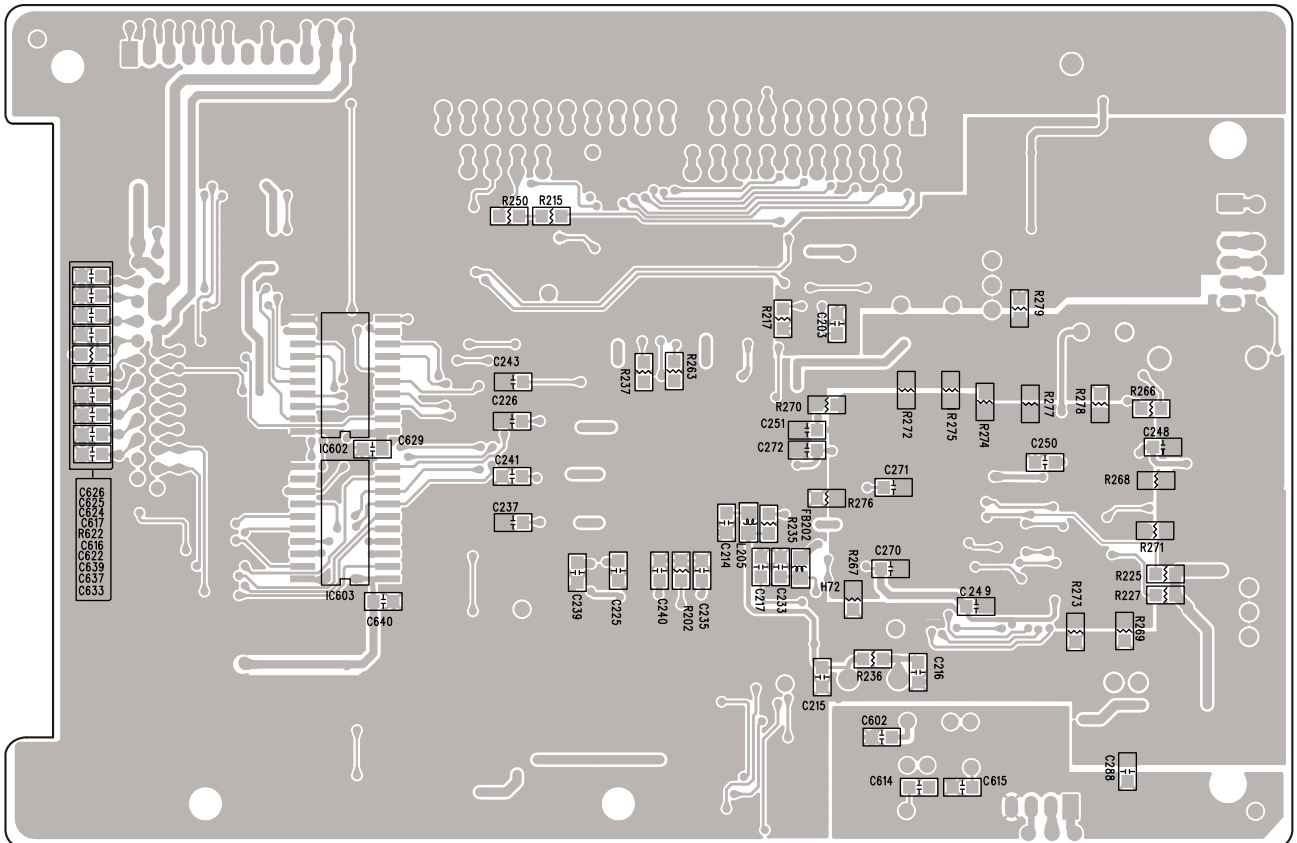
REF. NO	PARTS NO.	DESCRIPTION
FB202	SCB008050-1010	CHIP BEAD 100 OHM
IC602,603	RCI740374-0002	IC-74HC374

DV-C200

MPEG PCB - TOP



MPEG PCB - BOTTOM



CONTROL PCB ASSY - TOP

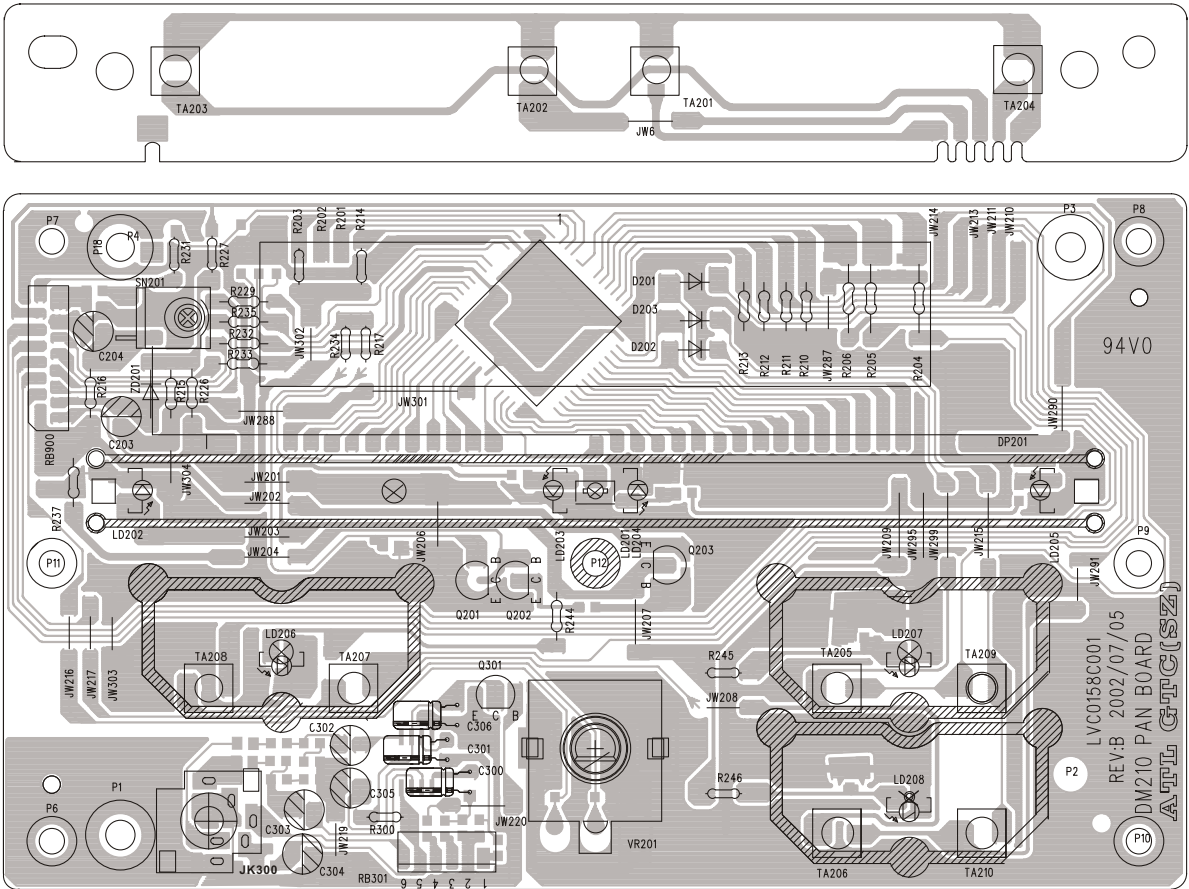
REF. NO	PARTS NO.	DESCRIPTION
	APE100158-0001	CONTROL PCB ASSY
	LVC100158-0001	CONTROL PCB
D201-203	RAD114148-0010	DIODE 1N4148
DP201	KLV000005-0010	VFD 83.2x17mm
JK300	CJM035010-1010	PHONE JACK 6P
LD201	KED300205-0010	LED - ORANGE 2x5mm
LD202-208	KED600005-0030	LED -BLUE D5MM
Q201,202,301	RAN200945-0001	TR-2SC945
Q203	RAP200733-0001	TR-2SA733
SN201	RHO200038-0001	IRT SENSOR RIMB38F
TA201-210	MAW060001-0010	SW SKHVBE3520
VR201	MSW005009-0010	ROTARY VOLUME
ZD201	RAZ005005-0030	ZENER DIODE 5.2V

CONTROL PCB ASSY - BOTTOM

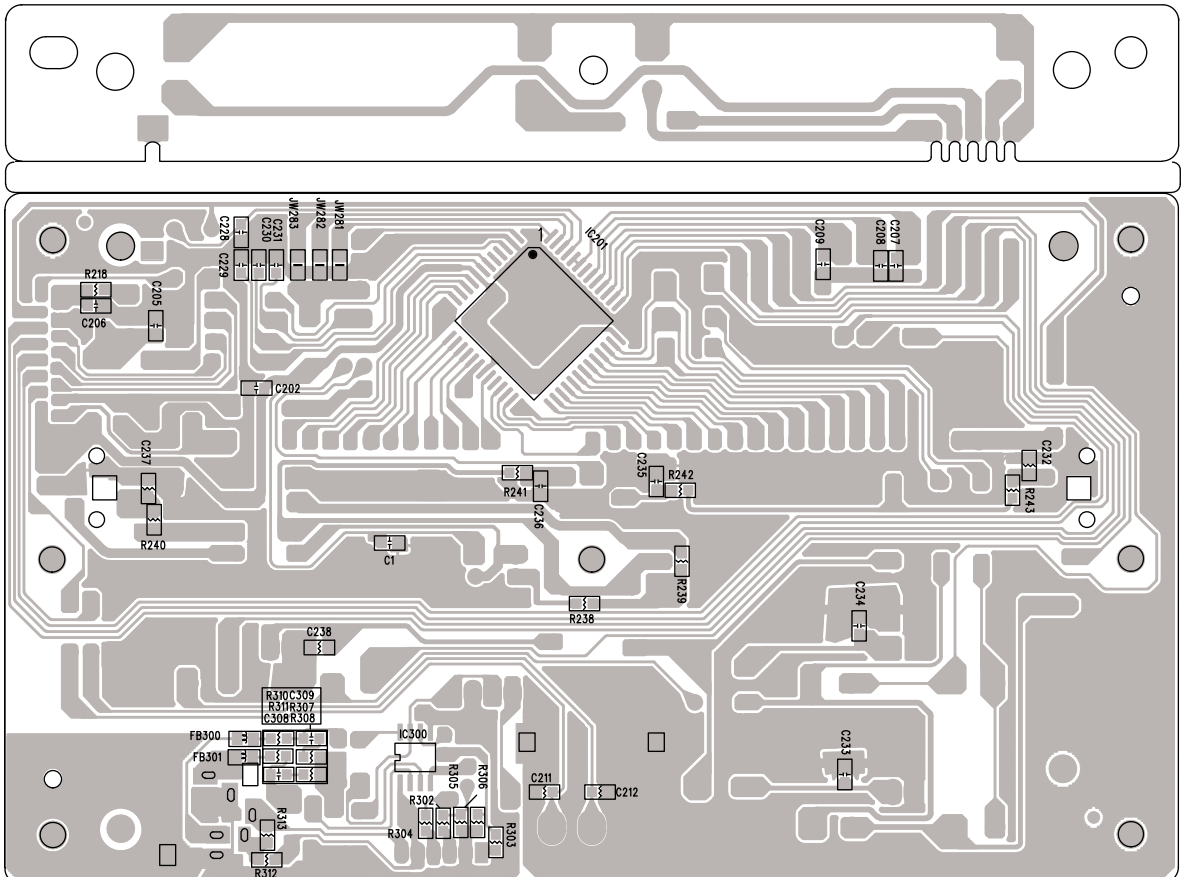
REF. NO	PARTS NO.	DESCRIPTION
FB300,301	SCB008050-6010	CHIP BEAD 600 OHM
IC201	RCI006311-0001	IC-PT6311
IC300	RCI052280-0001	IC-PT5228

DV-C200

CONTROL PCB - TOP



CONTROL PCB - BOTTOM



TUNER PCB ASSY - TOP

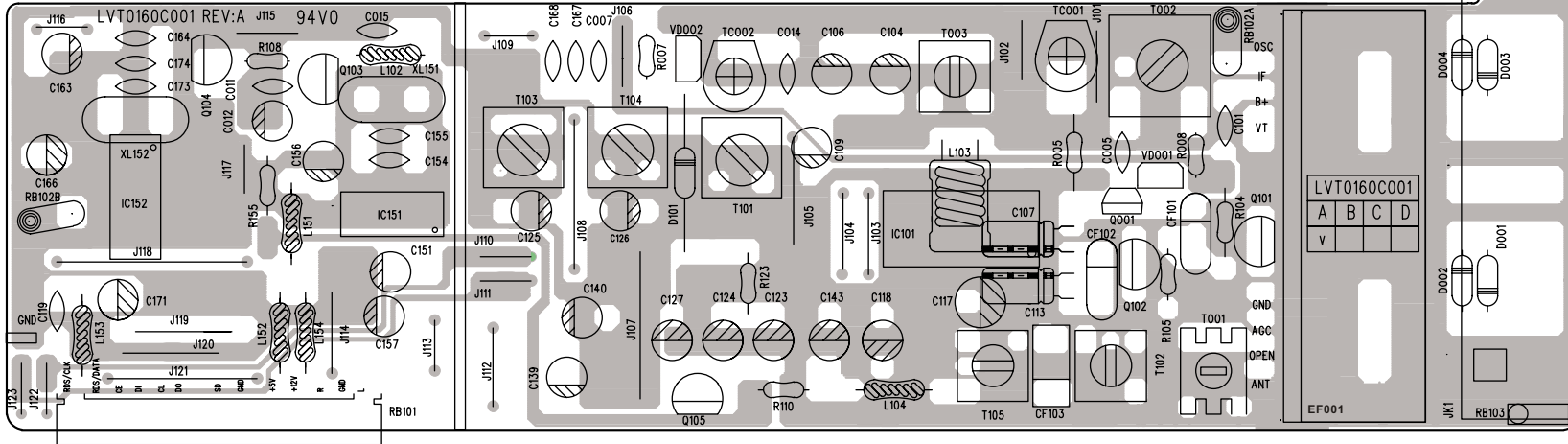
REF. NO	PARTS NO.	DESCRIPTION
	APE100160-0001	TUNER PCB ASSY
	LVT100160-0001	TUNER PCB
CF101	JFT005002-0020	CER. FILTERSFE10.7MA
CF102	JFT005002-0040	CER. FILTERSFE10.7MS3
CF103	JFT005001-0030	CER. FILTER450KHZ
D001-004,D101	RAD114148-0010	DIODE 1N4148
EF001	WTP000005-0001	TUNER PACK-FTE3-500H
JK1	CJA001005-2010	ANT JACK
L102,104,153,154	SAN001600-1000	INDUCTOR 10UH
L103	SAN001600-3930	INDUCTOR 39mH
Q001	RAM200192-1001	TR-2SK192A
Q101,102	RAN201675-0001	TR-2SC1675
Q103	RAP200733-0001	TR-2SA733
Q104,105	RAN200945-0001	TR-2SC945
T001	SIL013012-0010	OSC COIL
T002	SIL013009-0011	AM ANT OSC-0A10
T003	SIL013010-0012	OSC COIL -502522
T101	SIL016001-0010	BIAS COIL -865807
T102	SIF010001-0040	AM IFT -455KHz
T103,104	SIL016001-0020	BIAS COIL -865806
T105	SIF020001-0050	FM IFT -10.7MHz
TC001	MVC001001-0010	TRIMMER 3-10PF
TC002	MVC001002-0010	TRIMMER 4.2-20PF
VD001,002	RHV100149-0001	DIODE ISV149B
XL152	JQC013101-4550	CRYSTAL 4.5MHZ

TUNER PCB ASSY - BOTTOM

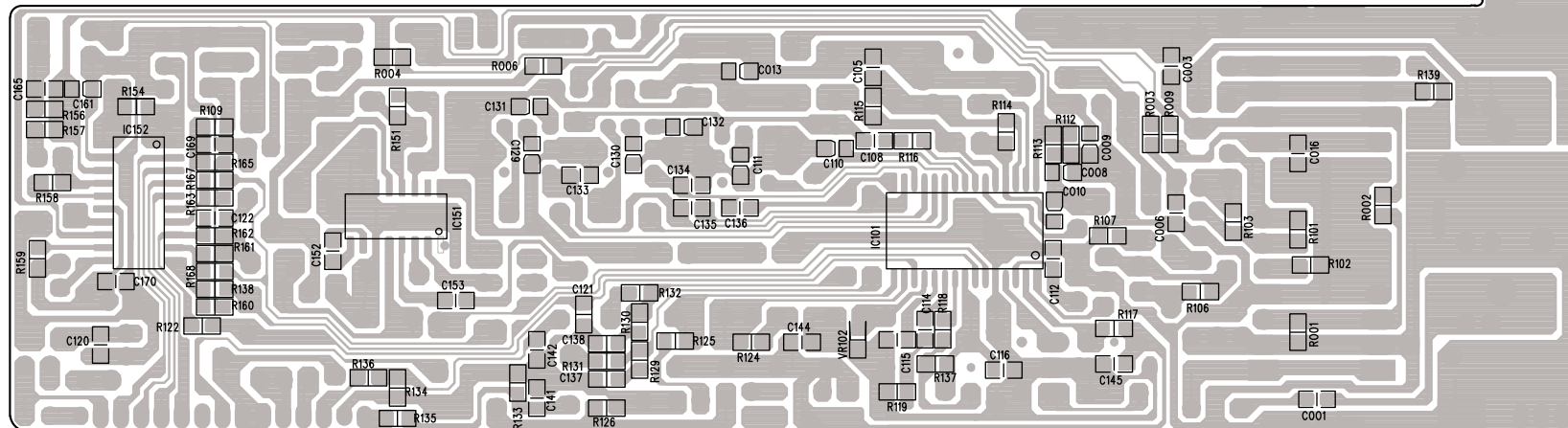
REF. NO	PARTS NO.	DESCRIPTION
IC101	RC1001837-0001	IC - LA1837
IC152	RC1072131-0001	IC - LC72131M

DV-C200

TUNER PCB - TOP



TUNER PCB - BOTTOM



POWER PCB ASSY

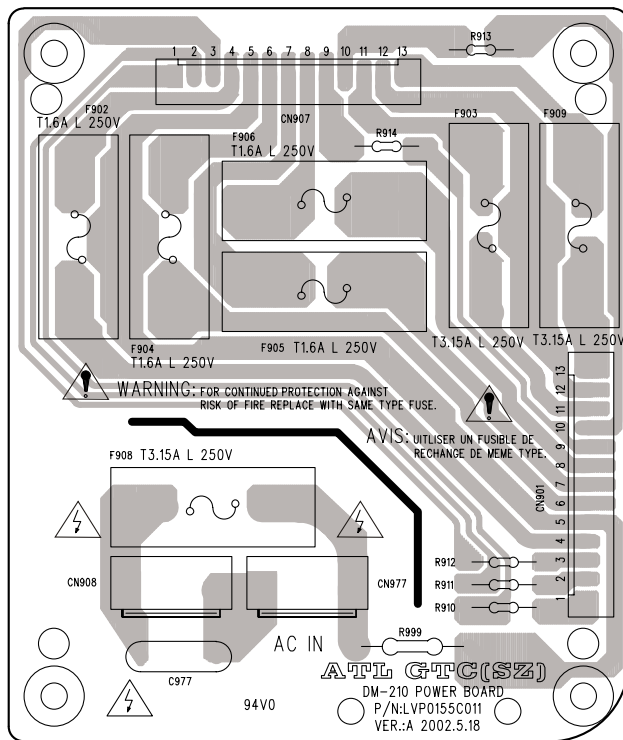
REF. NO	PARTS NO.	DESCRIPTION
	APE100155-0011	POWER PCB ASSY
	LVP100155-0011	POWER PCB
CN901,907	CCN250000-0113	CONNECTOR 13PIN P=2.5MM
CN908,977	CCN396021-0104	CONNECTOR 4PIN P=3.96MM
F902,904-906	△ KSA020160-0030	FUSE 1.6A 250V
F903,908,909	△ KSA020315-0030	FUSE 3.15A 250V

OPTICAL PCB ASSY

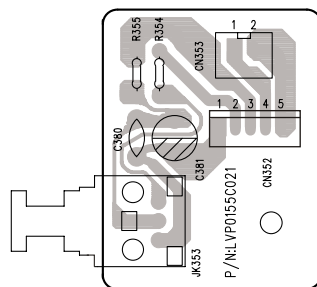
REF. NO	PARTS NO.	DESCRIPTION
	APE100155-0021	OPTICAL PCB ASSY
	LVP100155-0021	OPTICAL PCB
CN352	CCN200000-0105	CONNECTOR 5PIN P=2MM
CN353	CCN250000-0102	CONNECTOR 2PIN P=2.5MM
JK353	CJT100001-0001	JACK TOTX178A

DV-C200

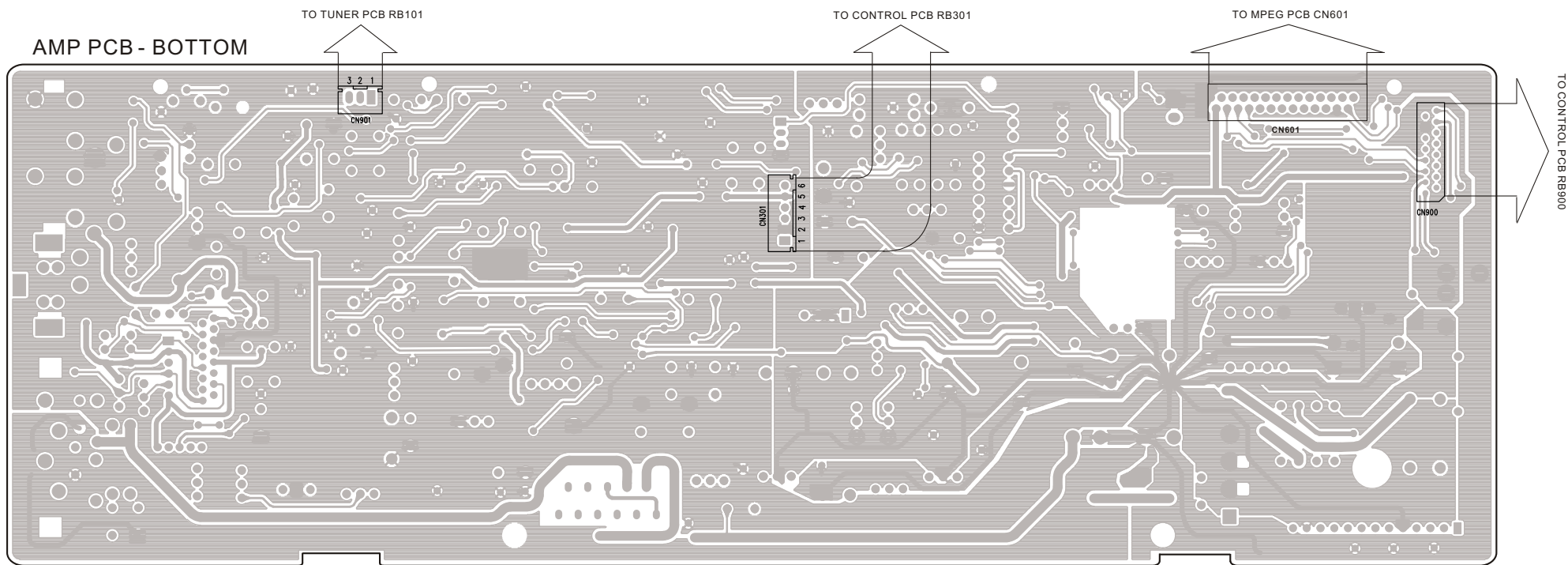
POWER PCB



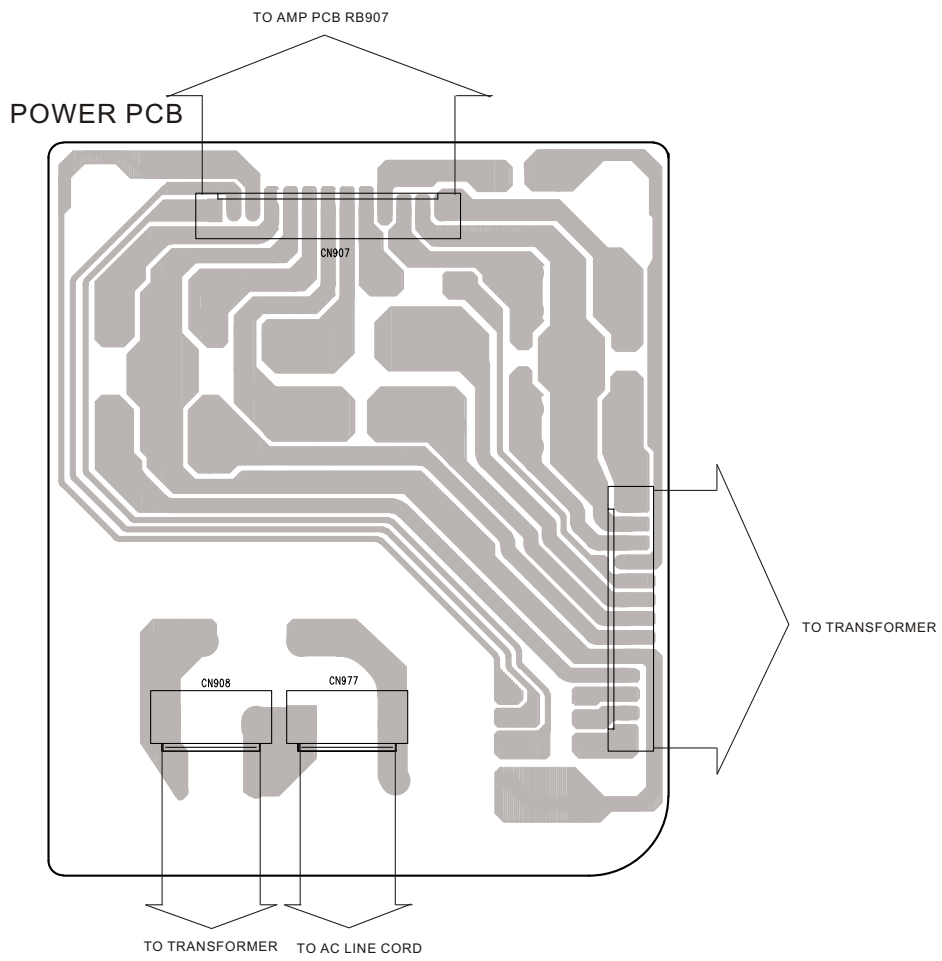
OPTICAL PCB



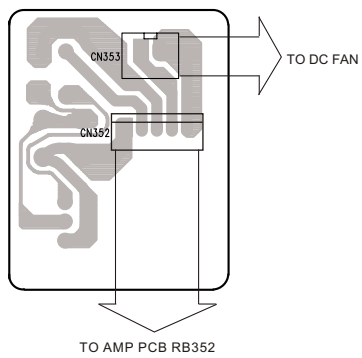
6 WIRING DIAGRAM



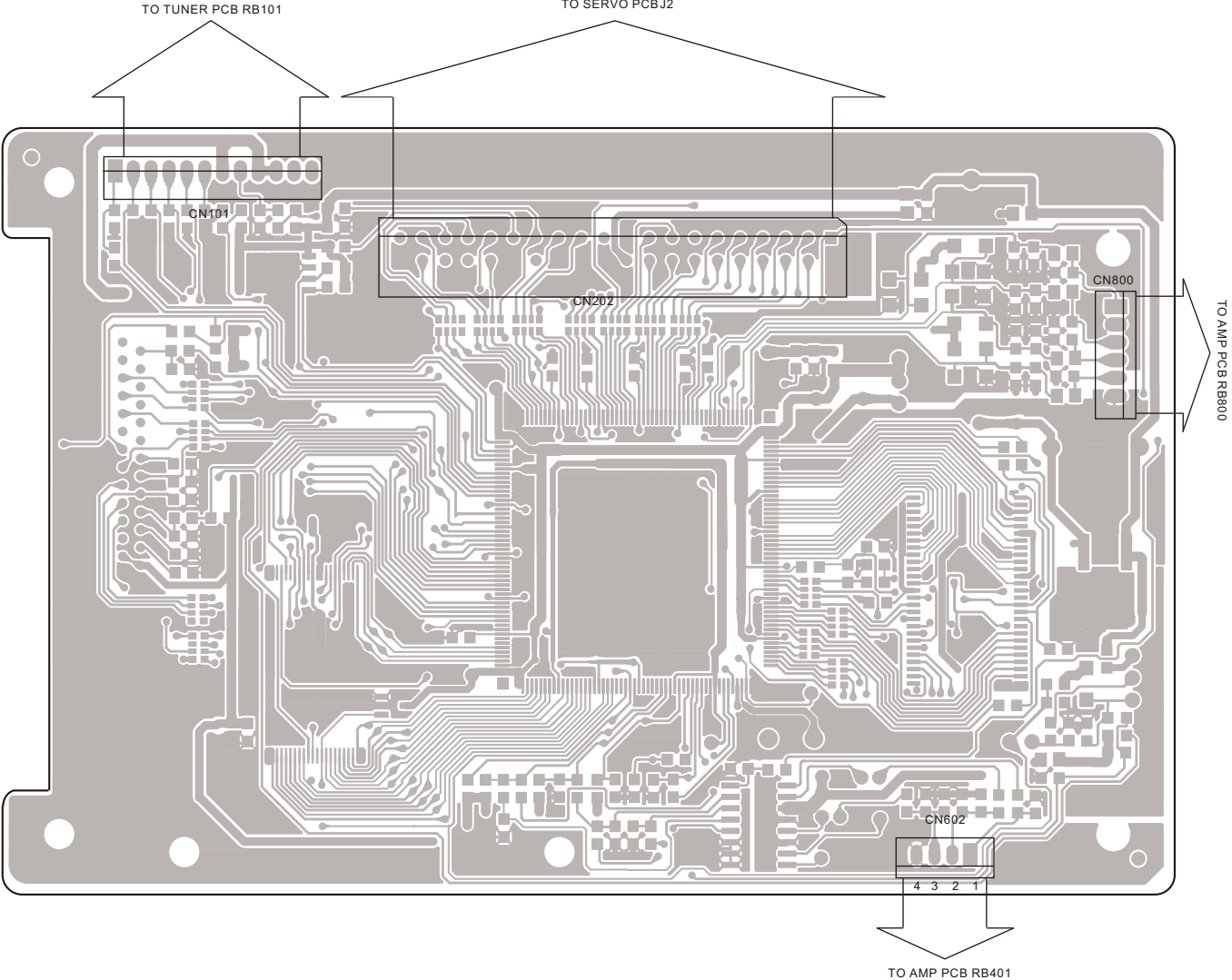
DV-C200



OPTICAL PCB



MPEG PCB - TOP



DV-C200

7 INCLUDED ACCESSORIES

INCLUDED ACCESSORIES

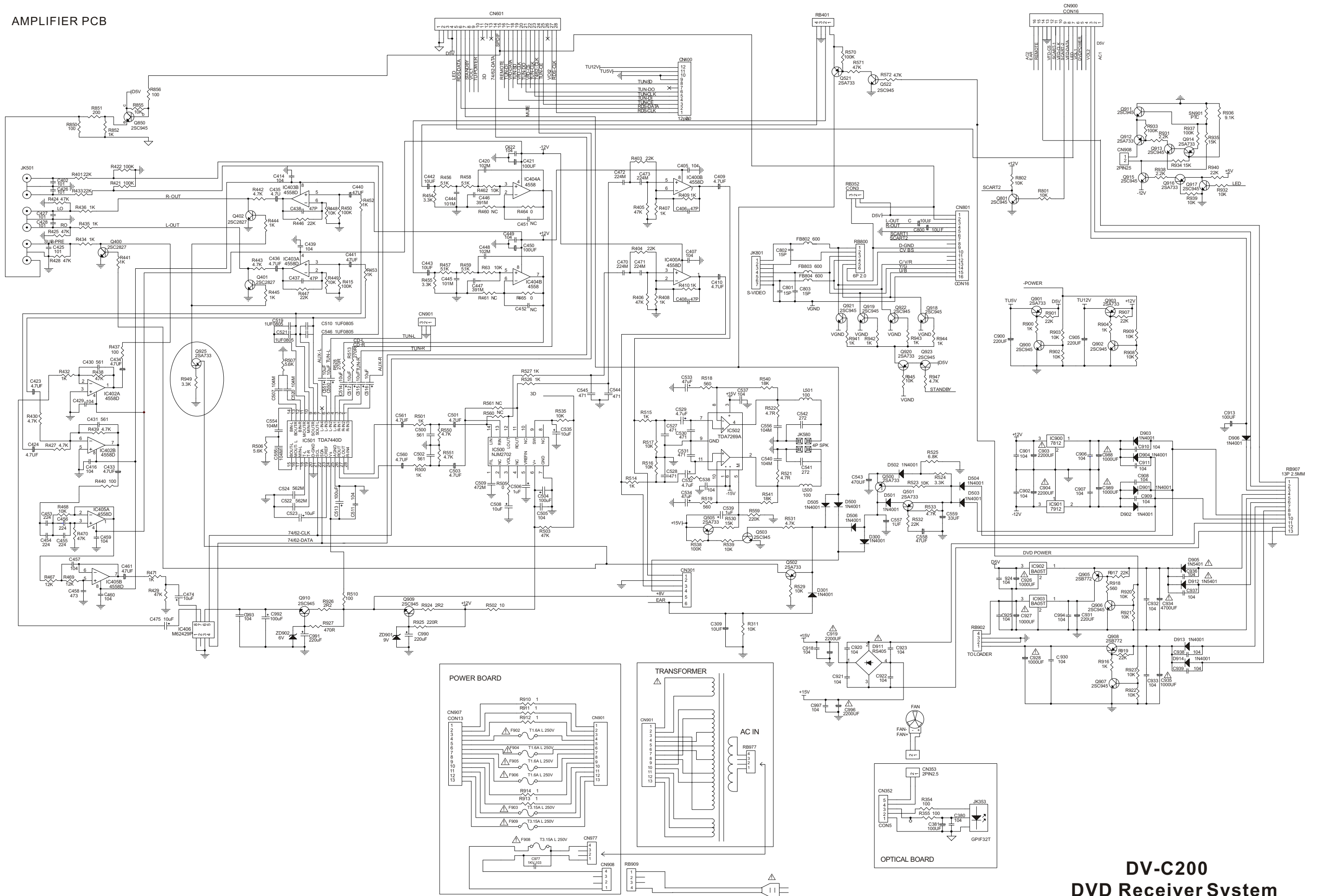
REF. NO	PARTS NO.	DESCRIPTION	REMARKS
	YWC100016-0001	WARRANTY CARD	
	YOM100138-0001	INSTRUCTION BOOK	
	VTA100001-0020	AM LOOP ANTENNA	
	VTA400001-0020	FM ANTENNA	
	VWS331044-2000	SPEAKER CABLE x2	
	FBY064015-0003	BATTERIES (AAA,R03,UM-4) x2	
	AIR151009-0029	REMOTE CONTROL	

DV-C200

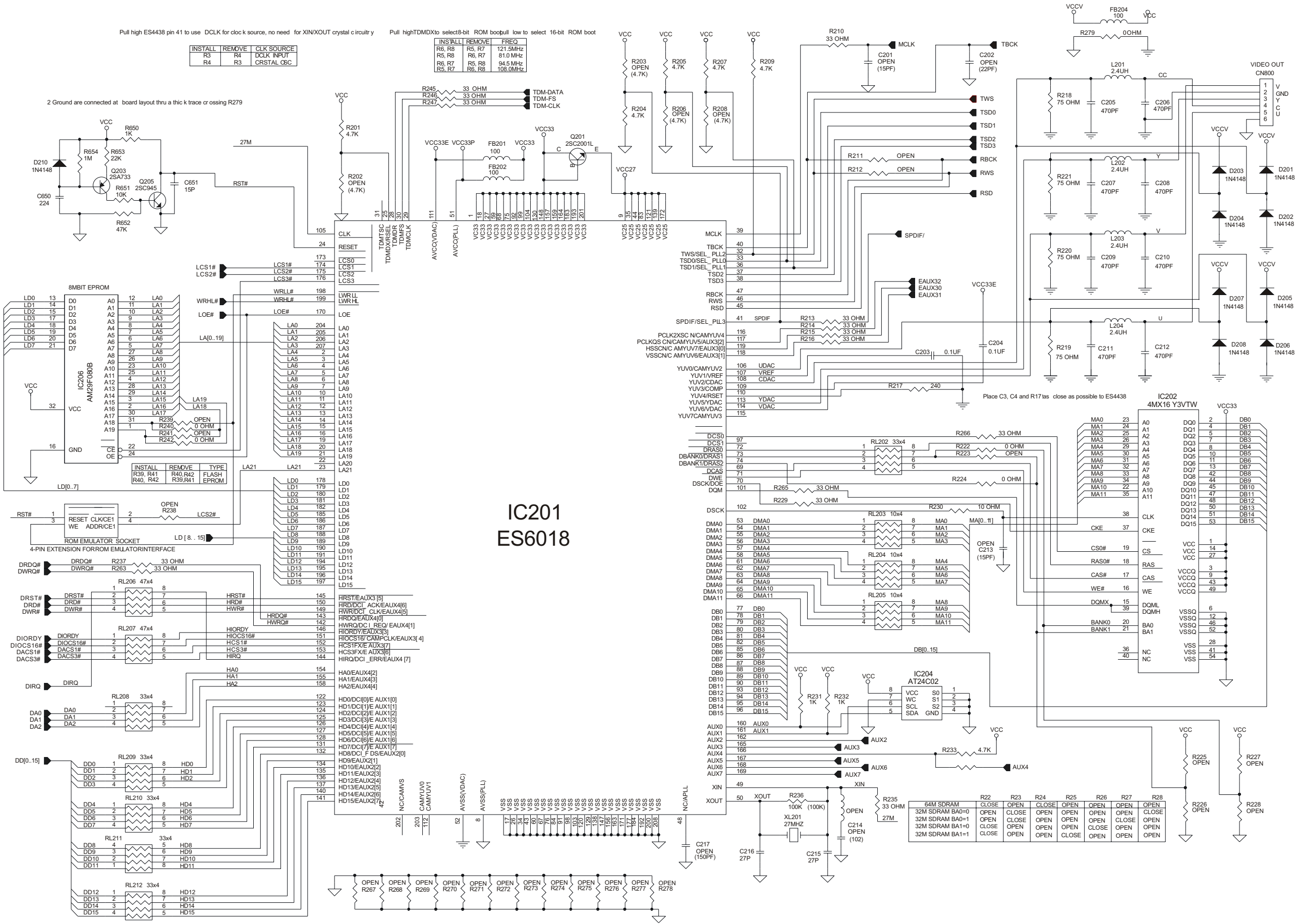
TEAC

TEAC CORPORATION	3-7-3 Nakacho, Musashino-shi, Tokyo 180-8550, Japan Phone:(0422)52-5081
TEAC AMERICA, INC.	7733 Telegraph Road, Montebello, California 90640 Phone: (323)726-0303
TEAC CANADA LTD.	5939 Wallace Street, Mississauga, Ontario L4Z 1Z8, Canada Phone: (905)-890-8008
TEAC MEXICO, S.A.De C.V.	Campesinos 184, Col. Granjas Esmeralda, 09810, Mexico Phone: (525)-581-5500
TEAC UK LIMITED	5 Marlin House, Croxley Business Park, Watford, Hertfordshire, WD188TE, U.K. Phone:01923-819699
TEAC DEUTSCHLAND GmbH	Bahnstrasse 12, 65205 Wiesbaden-Erbenheim, Germany Phone:0611-71580
TEAC FRANCE S.A.	17, Rue Alexis-de-Tocqueville, CE 00592182 Antony Cedex, France Phone:(1)42.37.01.02
TEAC NEDERLAND BV	Oeverkruid 15, NL-4941 WRaamsdonksveer, Nederland Phone:0162-510210
TEAC BELGIUM NV/SA.	c/o TEAC NEDERLAND BV, Oeverkruid 15, NL-4941 WRaamsdonksveer, Nederland Phone:+31-162-510860
TEAC ITALIANA S.p.A.	Via C, Cantu 11, 20092 Cinisello Balsamo, Milano, Italy Phone:02-66010550
TEAC AUSTRALIA PTY., LTD.	280 William Street, Melbourne, VIC 3000, Australia Phone:(03)9672-2400
A.B.N.	80 005408 462

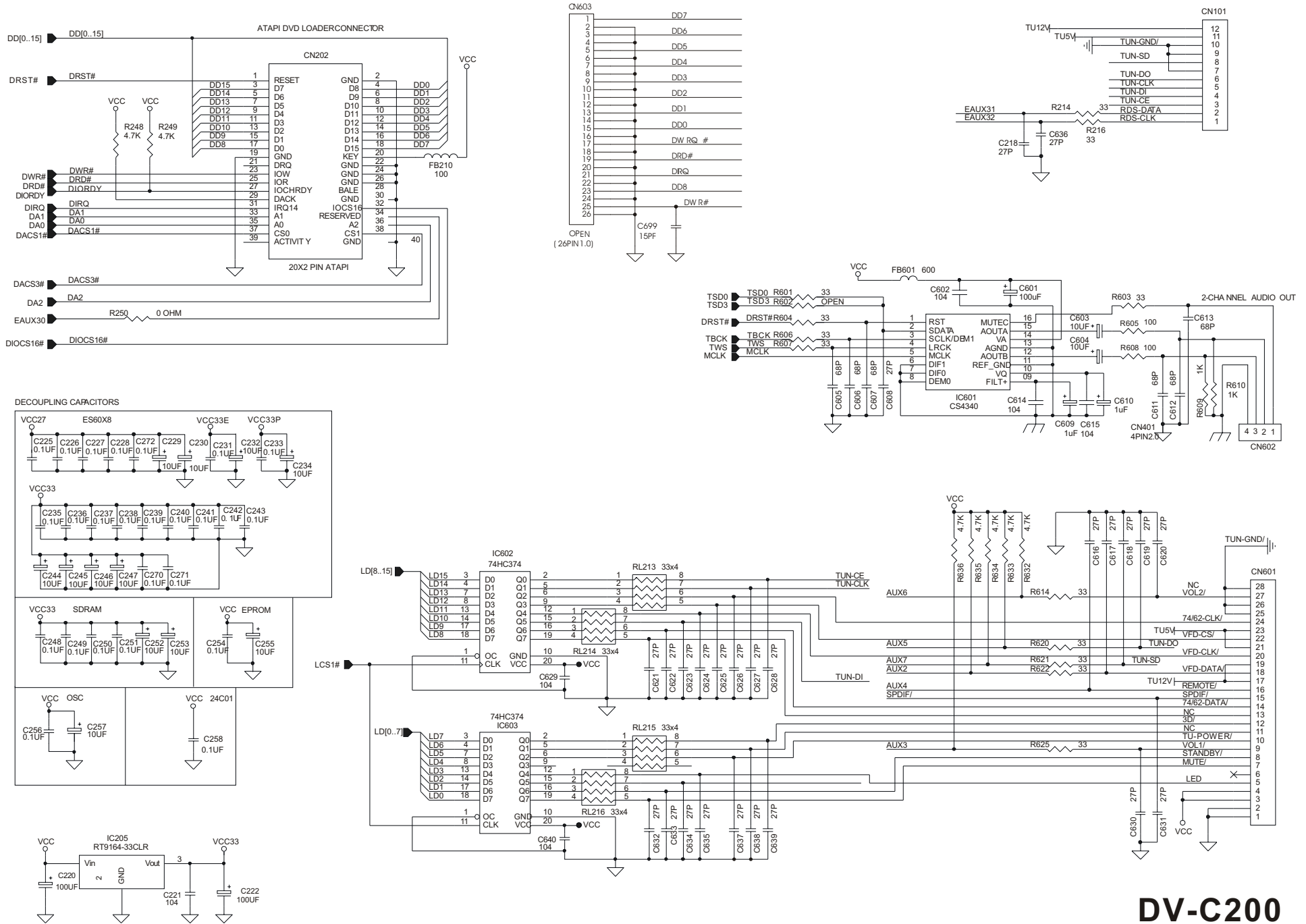
AMPLIFIER PCB



DV-C200
DVD Receiver System

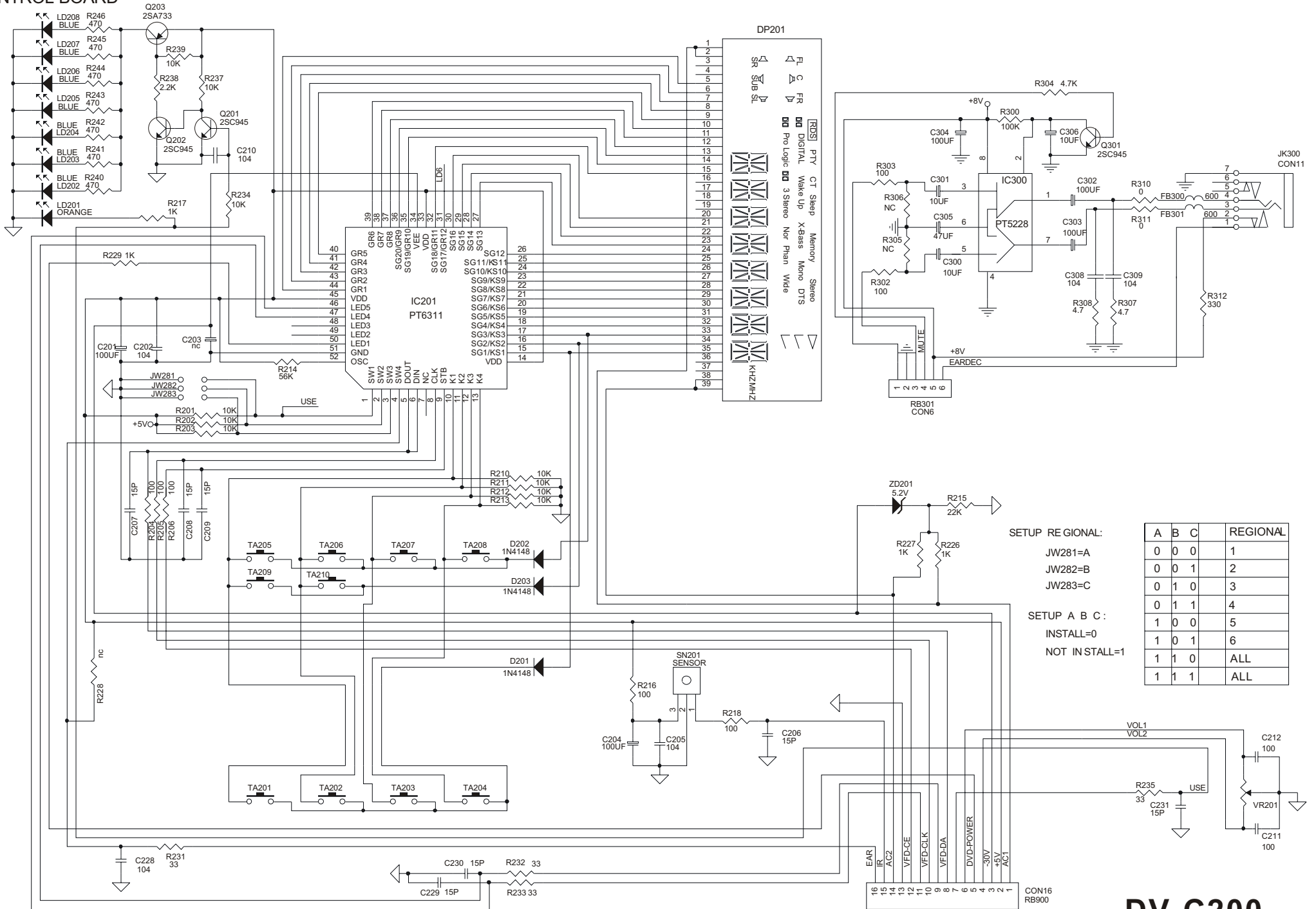


MPEG PCB



DV-C200 DVD Receiver System

CONTROL BOARD



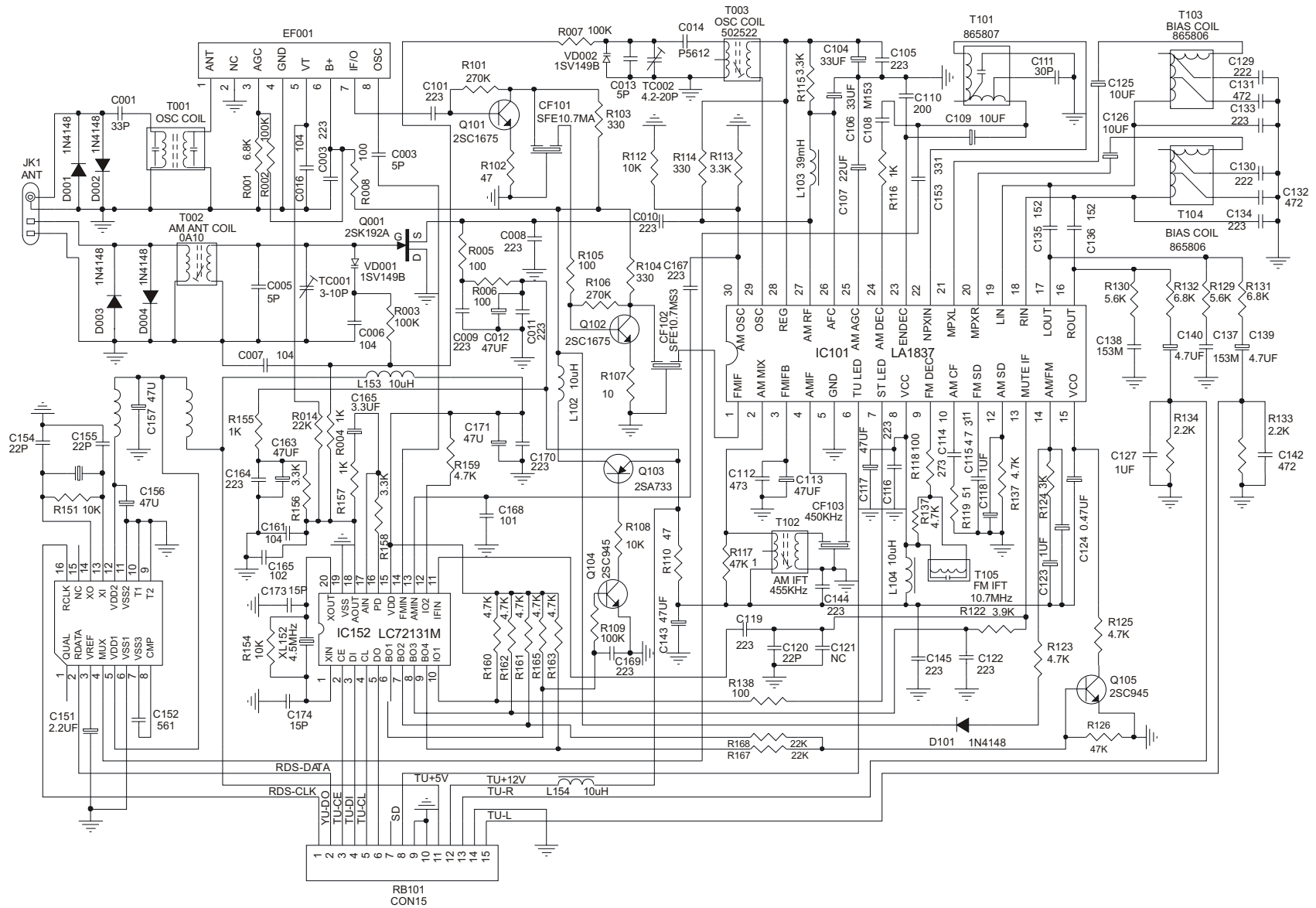
SETUP REGIONAL:
 JW281=A
 JW282=B
 JW283=C

SETUP A B C:
 INSTALL=0
 NOT IN INSTALL=1

A	B	C	REGIONAL
0	0	0	1
0	0	1	2
0	1	0	3
0	1	1	4
1	0	0	5
1	0	1	6
1	1	0	ALL
1	1	1	ALL

DV-C200 DVD Receiver System

TUNER PCB



DV-C200
DVD Receiver System